



Plantation Village News

94-695 Waipahu Street • Waipahu, HI 96797 • Ph: 808 677-0110
email: Waipahu.hpv@gmail.com
www.facebook.com/plantationvillage

May 2021

Hawaii's Plantation Village's 31st O-Bon Celebration

June 5, 2021 Saturday

94-695 Waipahu St, Waipahu, HI 96797 - (808) 677-0110

Hawaii's Plantation Village invites you to join us for a virtual night of dancing, a drive through pick up for food, and an open craft store on site! The video of the dancing will be available on June 5th. For updates please check the village website (<http://www.hawaiiplantationvillage.org/>) or call the office. On June 5th, the craft store will be open for purchases of hand-made items, such as one-of-a-kind happi coats. The village will be open for tours by appointment until 2 PM, the craft store will be open 10 AM to 5 PM.

Food pick up on June 5th from 3:30 – 5:30 PM

Orders can be made via website

(<https://hawaiisplantationvillage.square.site/>) or by calling the plantation, presale ends on May 17th.

Food options include:

K's Bento (\$8)

K's Maki Sushi Roll (\$6)

Kuni's Bento (\$10 includes yakitori, mahi tempura, shoyu pork, noodles, namasu, rice, takuan, and ume)

Andagi by Da Andagi-Guy (\$6 a dozen)

The video will have dance performances by:

Ewa Fukushima Bon Dance Club led by Robin Hirata and Cowen Azuma

Hawaii Shin Kobukai led by Sensei Betty DelaCuesta

Iwakuni Dance Group

Oahu District Bon Dance Club led by Elliot Peters

Waipahu Soto Mission Bon Dance Club led by Derrick Iwata

Hawaii's Plantation Village thanks you for your donation!

•Volunteers Needed•

Now that Covid restrictions are being lifted, it has become safer to return back to some normalcy. Mandatory mask wearing and social distancing are being observed as we reopened in mid November, and we have seen our visitor count increase steadily.

Please volunteer your services to help our museum continue to operate as efficiently as possible. Please let us know what you can offer to help, and we will find something you might be interested in doing. Volunteers get a gift shop discount, team t-shirt, and get to make lots of new friends! For seniors, one of the best activities to keep healthy is to socialize and keep your mind active. So come join our ohana.

If you like outdoor exercise, become a docent tour guide for 2 hours a day once a week (or more if you want) or sign up to be "on call". We need both Bi-lingual and/or English speaking guides. Training is offered.

We also need people with computer skills to help with our website, graphic arts, virtual programs.

For crafters, our Village Crafters meet on Wednesday; we welcome new members who have an interest in making items for our Gift Shop. You do not need to attend meetings...many of our members make items at home and drop off their donations. So if you are social distancing, by all means consider this option.

If you like working outdoors, we need volunteers to help maintain the houses and exhibits. You can opt to do general yard work, cleaning houses and exhibits, watering and pulling weeds...we appreciate all the physical help we can get to maintain our museum.

2022 will be our 30th anniversary; we are planning to release a new cookbook and need people to help coordinate and put the book together. Seeking volunteers to help with cookbook and other events.

Please call or e-mail us to get started!

News from the Hawaiian Garden

Wainani Teixeira has been quite busy in our Hawaiian garden and loi, as well as working with the young adults from the Hawaii Technology Academy (K-12 public charter school located in Waipahu).

The HTA Weekly Based Learners (WBL) program is winding down. Five brave learners re-emerged from Covid restrictions, allowing the garden, or *mala*, to be their classroom. The primary focus of the Hawaiian *mala* is feeding the people/community. We learn about all kinds of plants but especially *taro*, *lauhala*, *ulu*, and my personal favorite....WEEDS. We learn about a variety of things as they relate to the *mala* - relationships, cooking, harvesting, seasons and more.

The youth are encouraged to relate to the work, play and engage two times a week, for four hours, sometimes more depending on what the *mala* needs.

The goal is to present an *Aha aina*, or luncheon, where we get to share individual experiences, stories and reflections of time spent in the *mala*, like making *Lauhala Stars* with Aunty Lorna. The luncheon is for the families who supported their learning and an opportunity to partake in the yumminess of the *mala* too.

A *Mala* soup will be the main course and is comprised of *Lau Pele*, *Kalo*, and *Ulu*, all grown on site. This group also had the opportunity to harvest *Ohia Ai* - mountain apple from the garden that were preserved and will be shared in a special dessert. A refreshing garden grown *Wapine* - Lemongrass tea will also be served.

It has been a privilege to experience the *mala* with these young adults and many thanks to the support of HTA - especially Mr Z! He wanted it to happen. Ms. Alana and her students (3 not in the WBL cohort) commitment too. A shout out to volunteers Chanel, Lorna, and Malia for supporting the *mala* as a space for learning.

What's growing in the garden: Lemon Grass

Growing year round at the Tsoong Nee Society Building, and in the Hawaiian garden. Common ingredient in Thai cuisine. Reportedly, it has great health benefits including aid in digestive issues, neurological problems, high blood pressure, pain and fever reducer, antioxidant, antibacterial and antifungal properties. Lemon grass extract is used for it's fresh scent in candles, soaps, disinfectants and insect repellents.

A very versatile plant!

How to make lemon grass tea: Rinse leaves to clean; cut into 1" pieces, simmer in covered pot 10 min. Serve hot or cold.



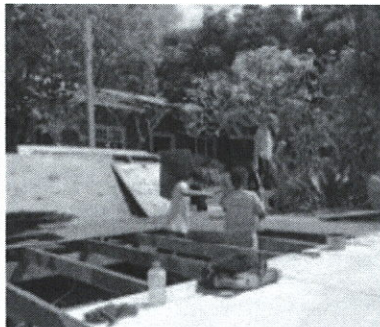
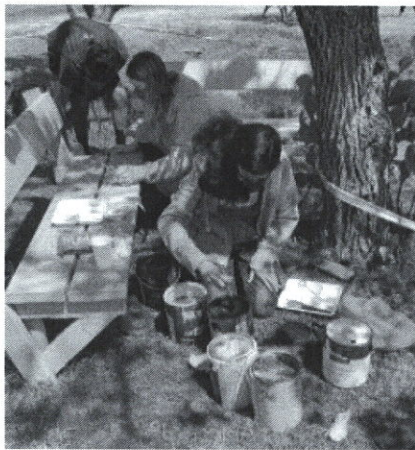
Executive Director: Evelyn Ahlo

2021 Board of Directors

President: Deanna Espinas **1st Vice-president:** Dan Nelson **2nd Vice-president:** William Rol

Treasurer: Glenn Ifuku

Clement Bautista Robert Castro Lorene Ono John Shockley Carol Takahashi Yoshiko Yamauchi Sephen Yuen



Mahalo!

Thank you once again to the LDS Mormon Church Leeward Ward "Just Serve" members for their help in landscape cleanup and maintenance at the Village on May 8.

We were fortunate to have BSA Troop 385 (Kamehameha Schools) under the leadership of Darren and Sherri Nii participate in several of our work days, helping as parking attendants and in other areas as needed.

Mahalo to Brandi Ahlo and son Kupa'a Ahlo-Medeiros for always being available to help us out.

Thank you to all who participated in our first Drive thru Hulihuli chicken and malassada sale on April 3. It was so successful that we are planning on having a Friday Pau Hana Pick-up fundraiser in a few months, so be sure to watch for that one.

As part of our community outreach, volunteer Lorene Ono will be giving oral presentations of sugar plantation immigrant history in May at the Hawaii Kai Retirement Community.

Pictured at left are Hawaii Technology Academy students working on improvement projects in the village. For many of them, this was their first experience with power tools.

Hawaii Technology Academy collaboration with Hawaii's Plantation Village

In partnership with HTA, their students began the second semester of the school year by touring the village, learned about our mission and goals, and identified projects they could work on to help us out while they gained valuable learning experiences. Class was held at least once a week in the village to work directly on the projects.

Thank you to Dr. Sharon Schleigh and the HTA students for their help with improvement projects in the village. We are ever so grateful to all those who were involved with these projects. This is just a very brief summary of what they achieved this semester.

The Stage Group rebuilt the outdoor stage and is designing a mural depicting the activities on the plantation. The Theater Group wrote plays to be performed on the outdoor stage. They interviewed our docents about life on the plantation, created props and learned about costumes of the period. The Infirmary Group repaired the porch, built planter boxes to plant medicinal plants used by different ethnic groups, and are learning how to use drip irrigation to make the project sustainable.

The Advertising Group is creating an interactive, fun pamphlet for younger visitors. Also in the works is creating a new welcome sign. The Water Group is working on how to keep invasive plants from entering the pond. The Fishpond group fixed and painted the pond bench, restored the deck, and cleared the area. The Technology Group interest is in helping to promote our museum: they have researched and are writing articles that can be posted on our website. They have been working on updating and maintaining our website. The students have been filming and recording our virtual Obon Festival that will be central to our June 5 event.

Become a member or renew today!

If you are already a member, we thank you for your support and look forward to seeing you at our future events and staying in touch through our emails and newsletters. If you haven't become a member yet, now is the ideal time to join our ohana and learn about ways you can contribute to keeping the legacy of our plantation fore-bearers alive. You can call us (808) 677-0110 to charge or send your check to 98-695 Waipahu Street, Waipahu, HI 96797.

We welcome you to our ohana!

Become a member of Hawaii's Plantation Village! Not only does your membership help sustain the daily operations of the Village, but your participation in our events throughout the year keeps the Village a lively and vital institution in our community. Benefits for membership levels are the following:

Individual (\$25) or Senior (\$20)

Free admission and guided tour for one year for one person.

Invitations to special events, exhibits, and cultural and heritage celebrations.

10% discount on purchases of our crafters' products

In addition to the invitations and discounts noted above, higher level memberships have the following additional admissions/tour benefits:

Family Plus (\$45)

Free admission & guided tour for 2 adults & children under 18 years at your address.

Double Seniors (\$25)

Free admission & guided tour for 2 guests (62 years or older)

Hoe Hana (\$100-\$249)

Free admission & guided tour for 5 guests

Wai Hana (\$250-\$499)

Free admission & guided tour for 6 guests

Luna (\$500 -749)

Free admission & guided tour for 7 guests

News from:



Hawaii's PLANTATION VILLAGE

Friends of Waipahu
Cultural Garden Park
94-695 Waipahu Street
Waipahu, HI 96797

New Look

Hawaii's Plantation Village Gift Shop

Regular store hours: Monday to Friday 10 a.m. to 2 p.m.

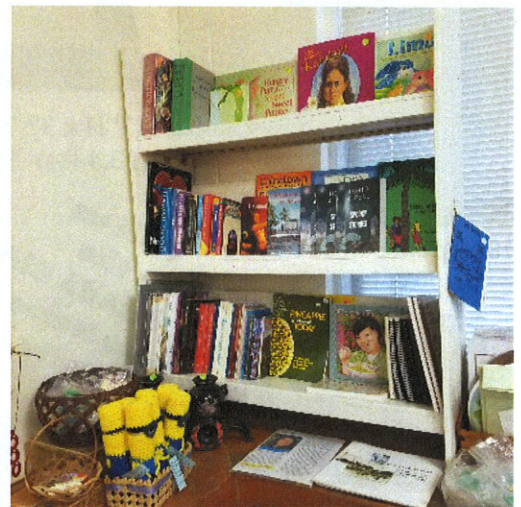
—Obon special hours on Sat. June 5 only: 10 a.m. to 5:00 p.m.—



The Plantation Store sign welcomes visitors to our museum and gift shop.



Check your weight on the antique scale from the old Kawano Store.; buy a fish for Boys' Day.



New and used books including Hawaiiana, cookbooks, children, and HPV coloring books for sale.



Mother's Day idea: an owl clothes pin bag/gift card. It's not too early to pick up a kimono or a happi coat (limited supply in stock) for Obon.



Behind the scenes

We are pleased to welcome George Tagama to our team of volunteers. He has years of experience on the mainland as a visual display merchandiser. His plantation roots play a big part in the new look he is creating for our gift shop. His vision is to get back to the plantation store look of the past, use of more natural props (no plastic!) and to showcase the beautiful creations of our dedicated Village Crafters who have been diligently filling our shelves with merchandise.

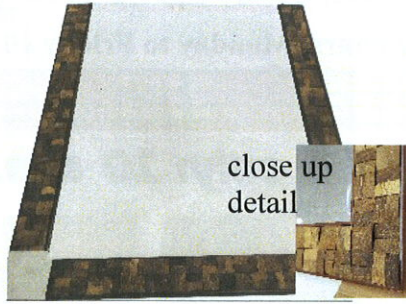
Coming soon: visit our virtual shop online at <http://www.hawaiiplantationvillage.org>.



OBON FESTIVAL *Country Store*



18" Japanese wood carving
\$150 or best offer



47"H x 37"W x 1.5"D Coconut mirror
(33.5 lbs) \$50 or make an offer

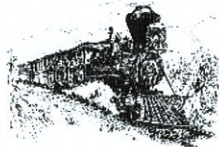


China set for 12.....\$100

**Visit us
in the
Okada Bldg now...
new items added
daily.**



Manchester China
set for 7.....\$80



11" x 17" set of 4 pen
and ink prints....\$60



Many other items including a dehydrator, juicer, "go" game set, lacquer trays, vintage kimonos, art for sale.



Virtual Bon Dance

From the comfort of your home, please enjoy our Virtual Bon Dance online presentation on June 5, 2021. Program includes blessing by Rev. Ryokei Ishii of Waipahu Soto Zen Temple Taiyoji; dancing by Ewa Fukushima Bon Dance Club, Hawaii Shin Kobukai, Iwakuni Dance Group, Oahu District Bon Dance Club and Waipahu Soto Mission Bon Dance Club. Please visit our website at <http://www.hawaiiplantationvillage.org> for viewing information.

PRE-ORDER NOW FOR JUNE 5 DRIVE-THRU PICK UP

Until May 17, for online ordering and prices,
go to <https://hawaiiplantationvillage.square.site>



Bento A



Bento B



Maki sushi



O-Bon towel



Andagi

HELP SUPPORT HAWAII'S PLANTATION VILLAGE

Your tax-deductible donation to Hawaii's Plantation Village helps to fund our programs and activities. We appreciate your interest and financial contribution. Please address your check to Hawaii's Plantation Village, c/o 94-695 Waipahu St., Waipahu, HI 96797. Indicate on check: "donation". Mahalo for your generous support.